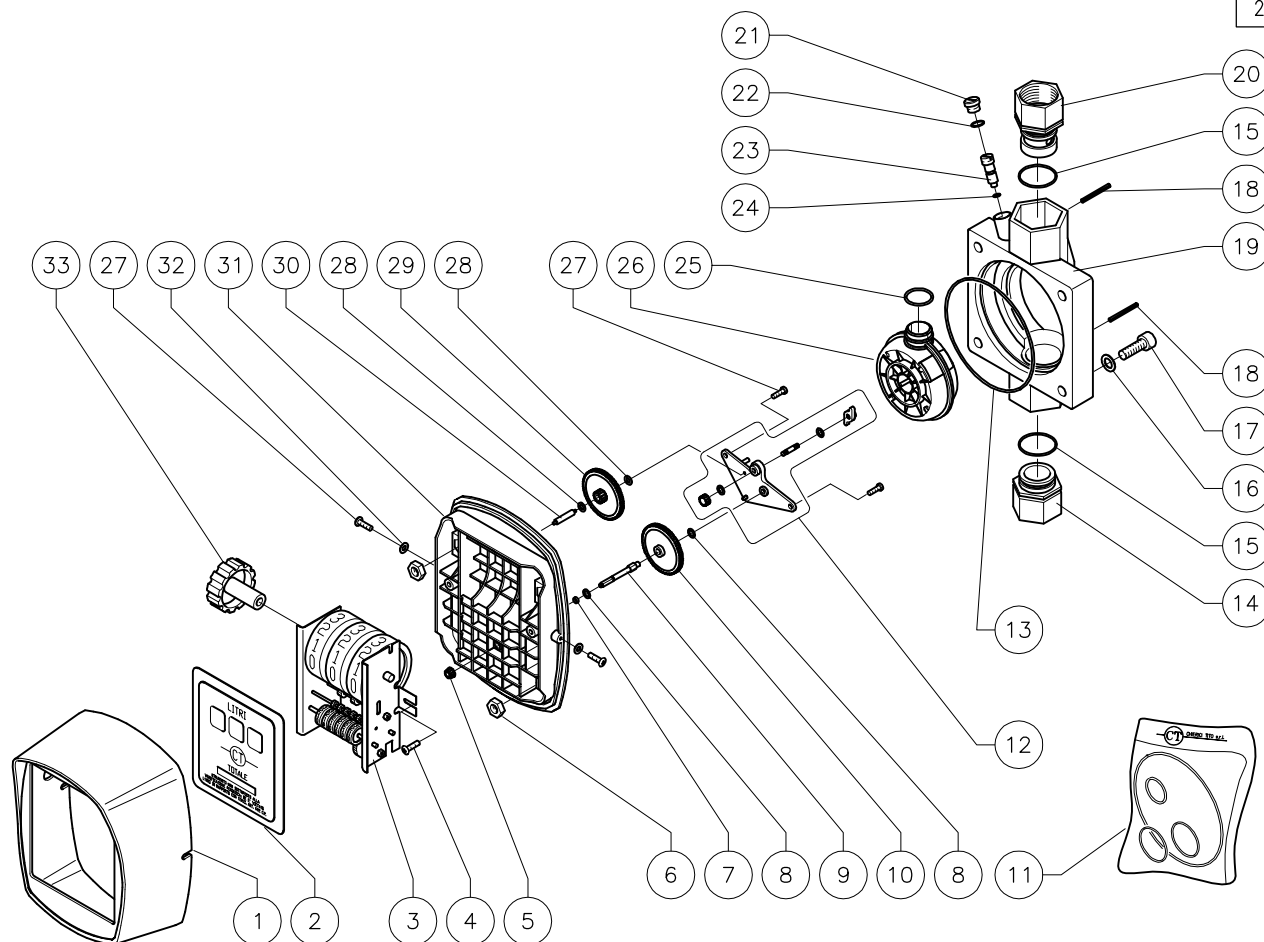


Per ordinare ricambi segnalare codice e quantità – For spare parts orders please mention code and quantity – Pour commander les pieces rechanges, indiquer le code et la quantité

29/10/10



POS	PART No.	DESCRIPTION	Q
1	13.0005.01	FRONT COVER	1
2	13.0005.06	FRONT SCREEN CTL "CT"	1
2	13.0005.18	FRONT SCREEN CTL NEUTRAL	1
2	13.0005.37	FRONT SCREEN CT. US. Gal.	1
3	15.0005.70	COUNTER	1
4	16.3002.00	SELF-TAP. SCREW PHILLIPS 4.5x16 ZB	2
5	13.0005.11	BEVEL GEAR Z 14	1
6	11.4574.00	HEX. NUT. MEDIUM 6S M8x6.5 ZB	4
6	11.4574.51	HEX. NUT. MEDIUM M8x6.5 S/STEEL A2	4
7	10.3038.10	O-RING 1.78X3.69 VI 75	1
7	10.3038.00	O-RING 1.78X3.69 NBR 70	1
8	2.0020.29	CHAMFERED WASHER AISI 304 D.4.2x9x0.5	2
9	12.0050.09	SHAFT FOR TOOTHED WHEEL Z 84	1
10	13.0005.13	TOOTHED WHEEL Z 84	1
10	13.0005.35	TOOTHED WHEEL Z 72 US. Gal.	1
11	99.0005.03	VITON SEAL KIT	1
11	99.0005.20	NBR SEAL KIT	1
12	99.0005.24	BRACKET KIT WITH GEARS AND CAM	1
13	10.3280.10	O-RING 3.53X98.02 VI 75	1
13	10.3280.00	O-RING 3.53X98.02 NBR 70	1
14	12.0020.12	INLET BUSH 1" GAS BRASS	1
14	12.0020.13	INLET BUSH 1" NPT BRASS	1
14	13.0005.27	INLET BUSH 1" GAS PLASTIC	1
14	12.0020.16	INLET BUSH 1" GAS S/STEEL	1
14	12.0020.08	INLET BUSH 3/4" GAS BRASS	1
14	12.0020.09	INLET BUSH 3/4" NPT BRASS	1
14	13.0005.25	INLET BUSH 3/4" GAS PLASTIC	1
14	13.0005.33	INLET BUSH 3/4" NPT PLASTIC	1
15	10.3202.10	O-RING 2.62X25.07 VI 75	2
15	10.3202.00	O-RING 2.62X25.07 NBR 70	2

POS	PART No.	DESCRIPTION	Q
16	14.3572.15	CHAMFERED WASHER D. 8.4x15x1.5 FE ZB	4
16	14.3654.51	CHAMFERED WASHER D. 8.4x15x1.5 S/STEEL A2	4
17	16.1958.26	SCREW TCEI UNI 5931 8G M8x25 ZB	4
17	16.1958.50	SCREW TCEI UNI 5931 M8x25 S/STEEL A2	4
18	15.1042.32	SPLIT PIN 3X32 S/STEEL	2
19	13.0005.03	LITRE-COUNTER BODY	1
20	12.0020.14	OUTLET BUSH 1" GAS BRASS	1
20	12.0020.15	OUTLET BUSH 1" NPT BRASS	1
20	13.0005.28	OUTLET BUSH 1" GAS PLASTIC	1
20	12.0020.17	OUTLET BUSH 1" GAS S/STEEL	1
20	12.0020.10	OUTLET BUSH 3/4" GAS BRASS	1
20	12.0020.11	OUTLET BUSH 3/4" NPT BRASS	1
20	13.0005.26	OUTLET BUSH 3/4" GAS PLASTIC	1
20	13.0005.34	OUTLET BUSH 3/4" NPT PLASTIC	1
21	12.0100.02	BRASS CAP ON ADJUST. SCREW	1
21	12.0100.04	S/STEEL CAP ON ADJUST. SCREW	1
22	10.3057.10	O-RING 1.78X9.25 VI 75	1
22	10.3057.00	O-RING 1.78X9.25 NBR 70	1
23	12.0100.01	ADJUST. SCREW BRASS	1
23	12.0100.03	ADJUST. SCREW S/STEEL	1
24	10.3049.00	O-RING 1.78X5.28 VI 75	1
24	10.3049.01	O-RING 1.78X5.28 NBR 70	1
25	10.3195.11	O-RING 2.62X20.29 VI 75	1
25	10.3195.00	O-RING 2.62X20.29 NBR 70	1
26	99.0005.16	VOLUMETRIC CHAMBER UNIT	1
27	16.3003.00	SELF-TAP. SCREW PHILLIPS 3.5x13 S/STEEL	4
28	14.3502.05	CHAMFERED WASHER AISI303 D.2x5x0.35	2
29	13.0005.14	DOUBLE TOOTHED WHEEL Z10 - Z67	1
29	13.0005.36	DOUBLE TOOTHED WHEEL US. Gal.	1
30	15.1012.18	PARALLEL PIN S/STEEL 2x18 UNI1707	1
31	13.0005.04	LITRE-COUNTER MIDDLE FLANGE	1
32	14.3520.09	WASHER UNI 6592 4.3x9x0.8 ZB	2
33	13.0005.05	LITRE-COUNTER RESET KNOB	1